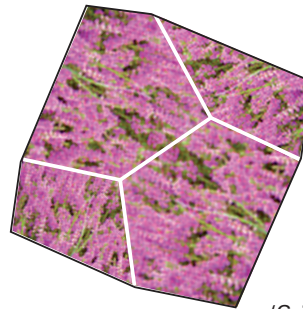
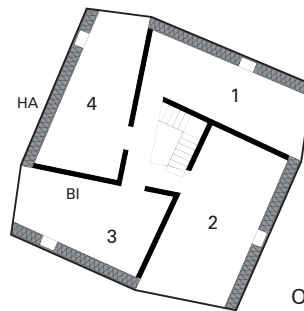


Schlipshheimer Str. 137  
86356 Neusäß Schlippsheim  
Tel. 0821-470 45 21  
www.lux-architect.com

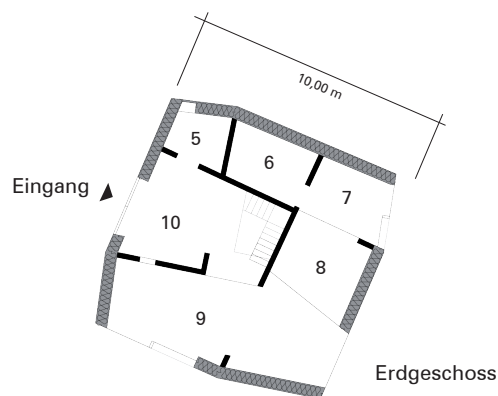
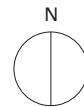
- HA Holzaussenwände
- Bl Betoninnenwände
- 1 Zimmer Ost
- 2 Zimmer Süd
- 3 Zimmer West
- 4 Bad Nord
- 5 Gäste WC
- 6 Technikraum
- 7 Essen
- 8 Kochen
- 9 Wohnen
- 10 Foyer



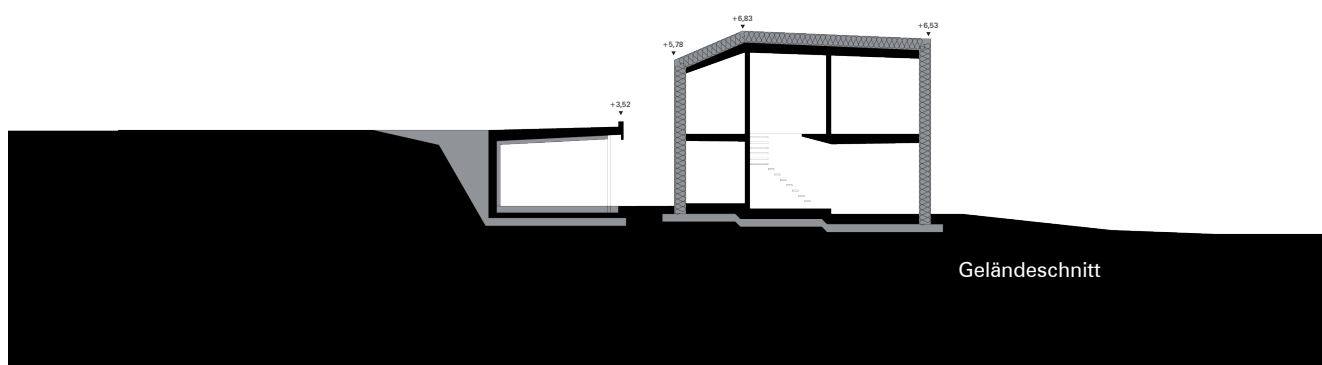
(Grün) Dach



Obergeschoss



Erdgeschoss

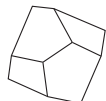


**Architekten:**  
**Manfred Lux, Architekt bda**

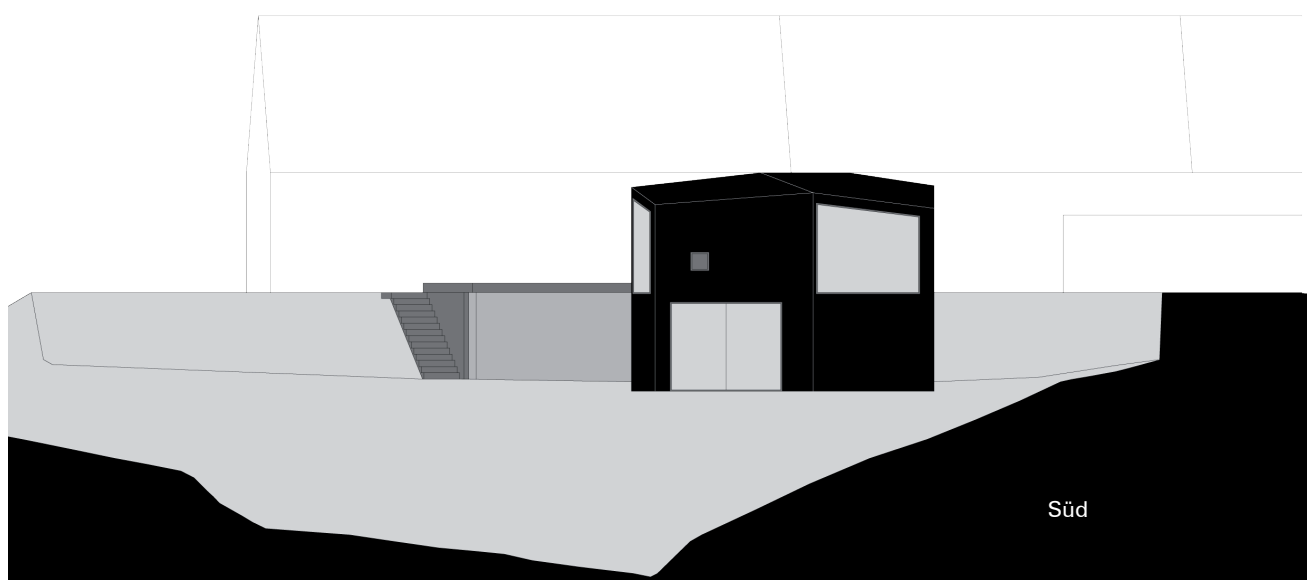
veröffentlicht in Heft 05/2015

HÄUSER

Schlipsheimer Str. 137  
86356 Neusäß Schlipsheim  
Tel. 0821-470 45 21  
www.lux-architect.com



ANSICHTEN  
WEISSE SCHALE, WARMER KERN

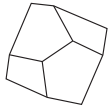


**Architekten:**  
**Manfred Lux, Architekt bda**

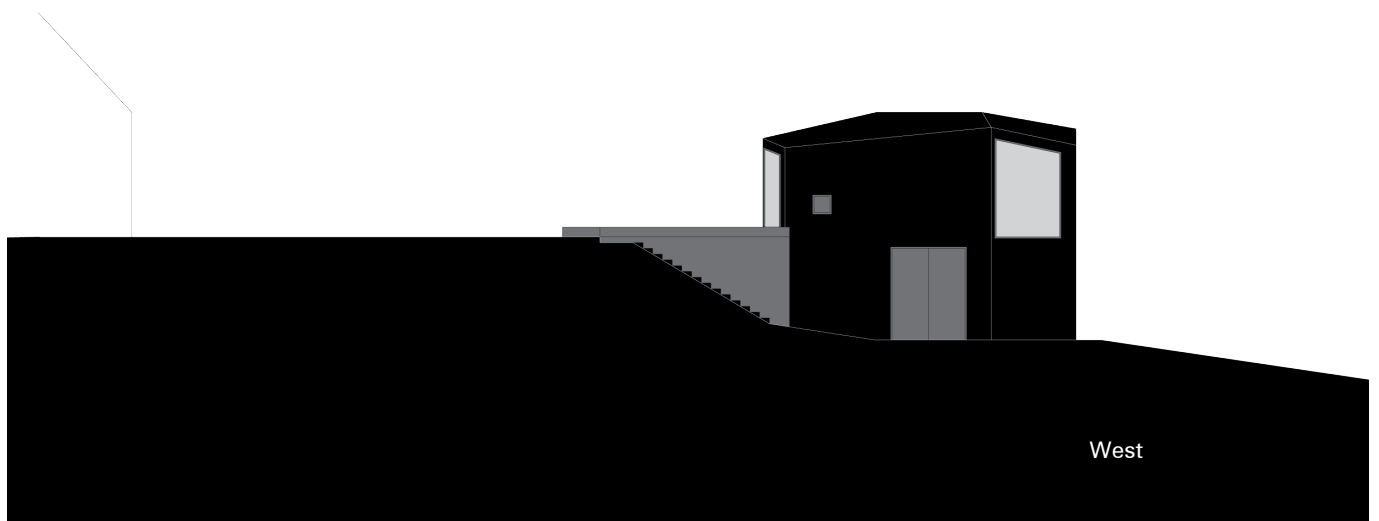
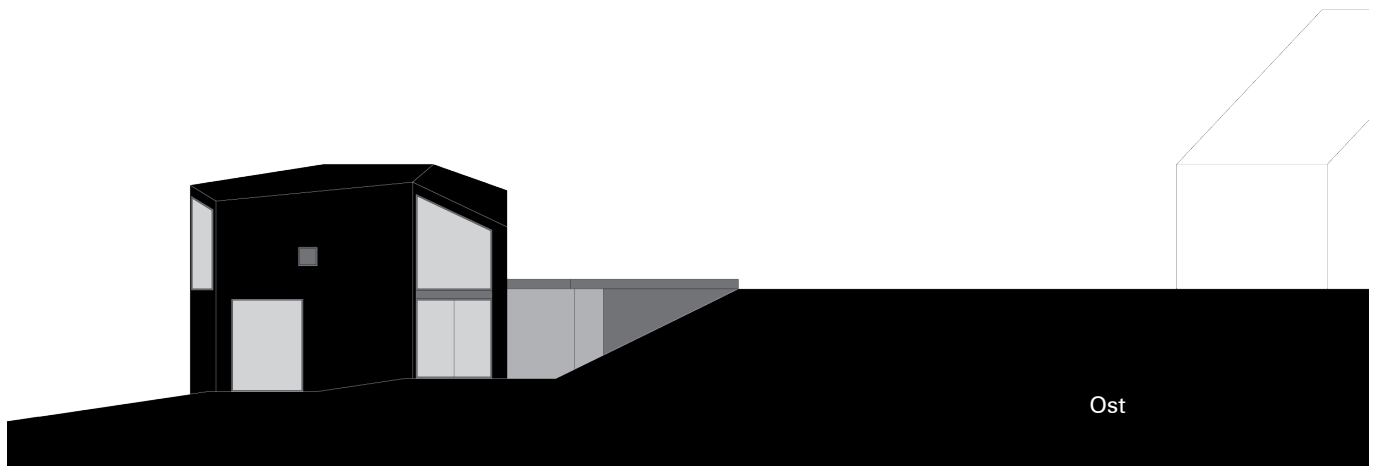
veröffentlicht in Heft 05/2015

HÄUSER

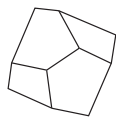
Schlipsheimer Str. 137  
86356 Neusäß Schlipshiem  
Tel. 0821-470 45 21  
www.lux-architect.com



ANSICHTEN  
WEISSE SCHALE, WARMER KERN



Schlipsheimer Str. 137  
86356 Neusäß Schlipshelm  
Tel. 0821-470 45 21  
www.lux-architect.com



LAGEPLAN 1:1000  
WEISSE SCHALE, WARMER KERN

