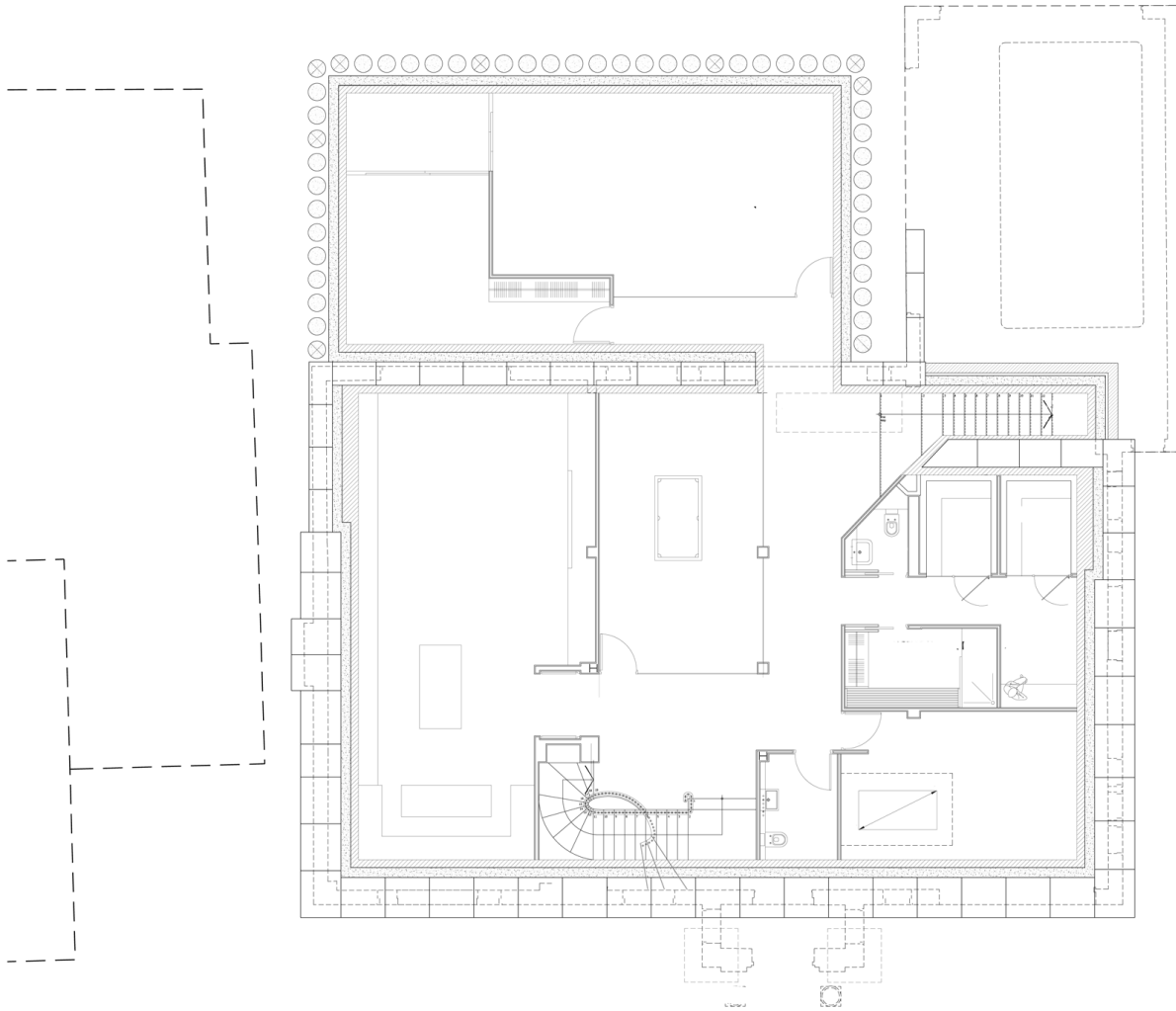
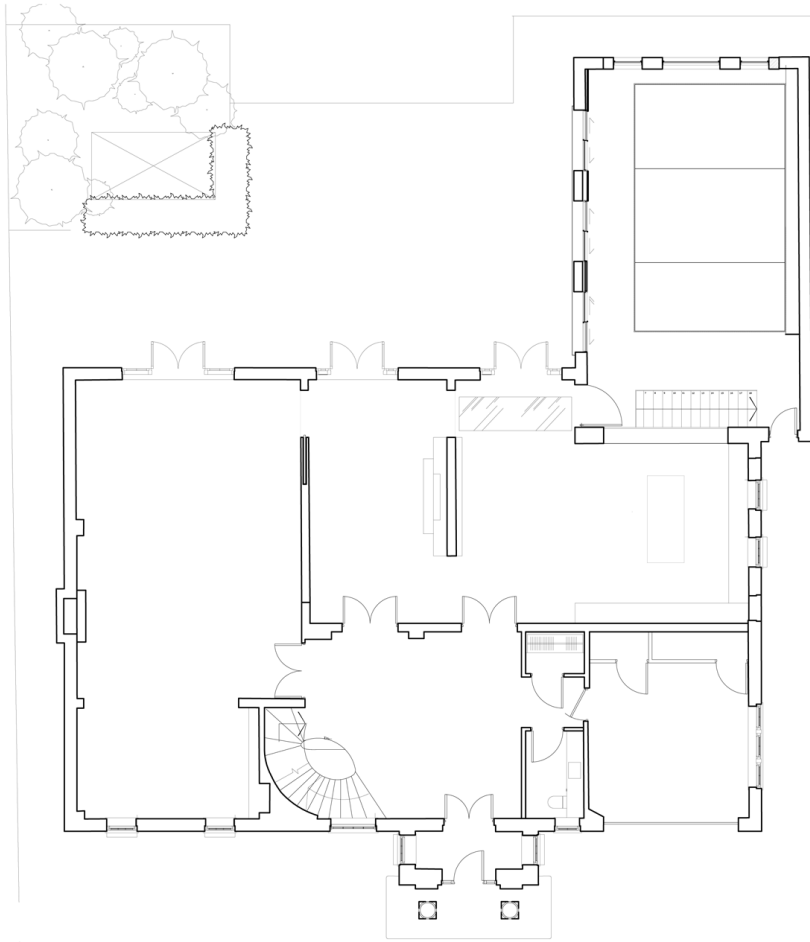


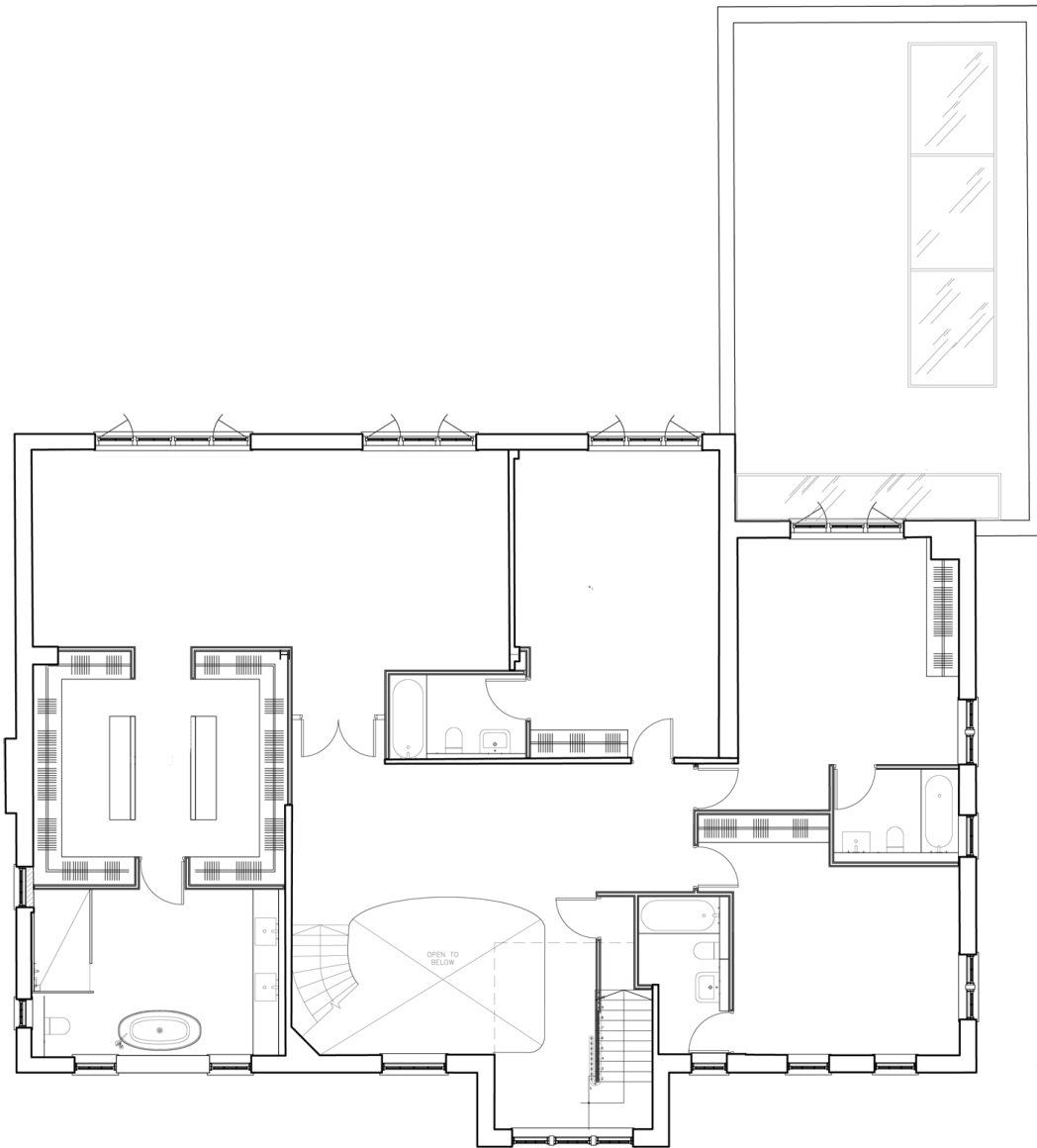
**Untergeschoss**



**Erdgeschoss**

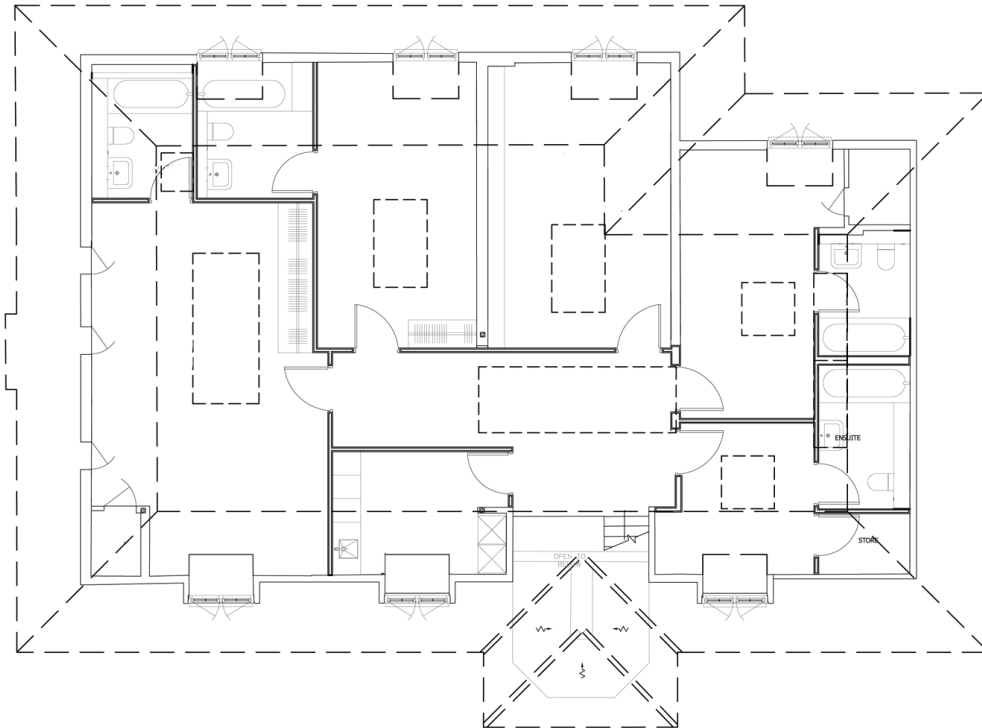


**1. Obergeschoss**

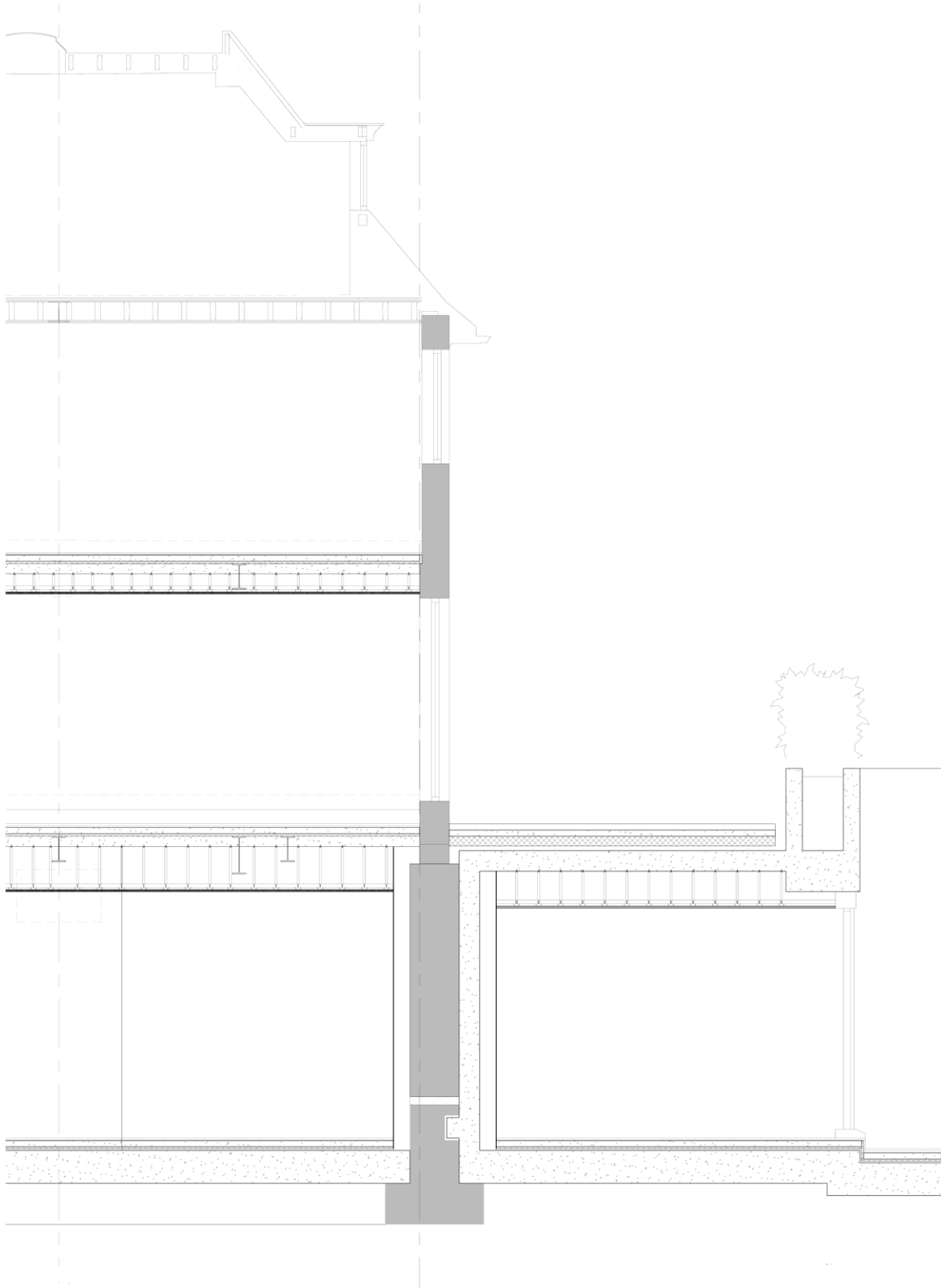


14 Marshalsea Rd  
London SE1 1HL  
Tel. +44 20 74073600  
www.minifiearchitects.co.uk

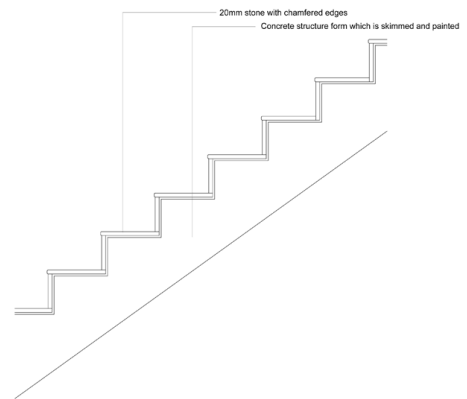
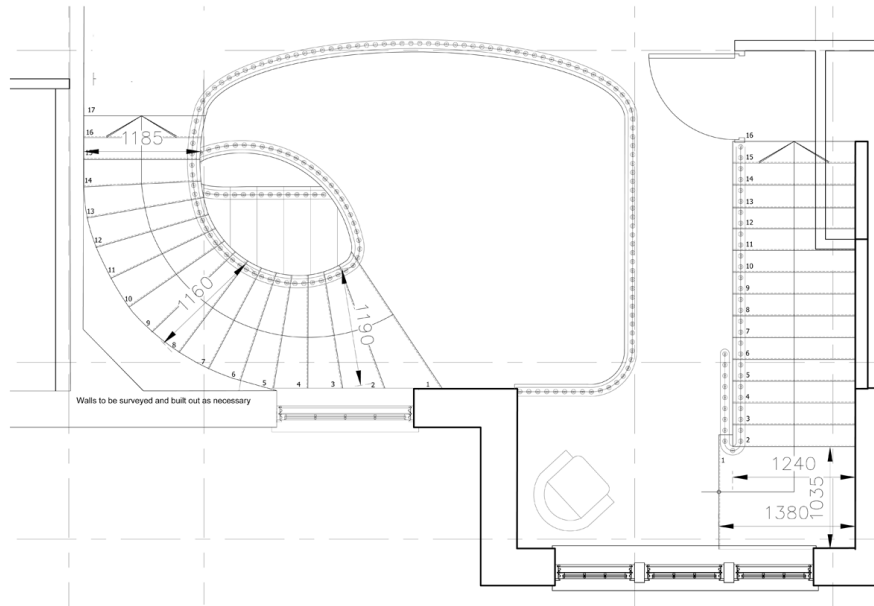
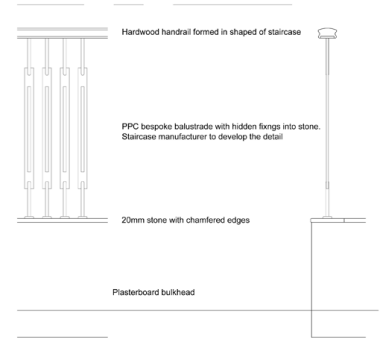
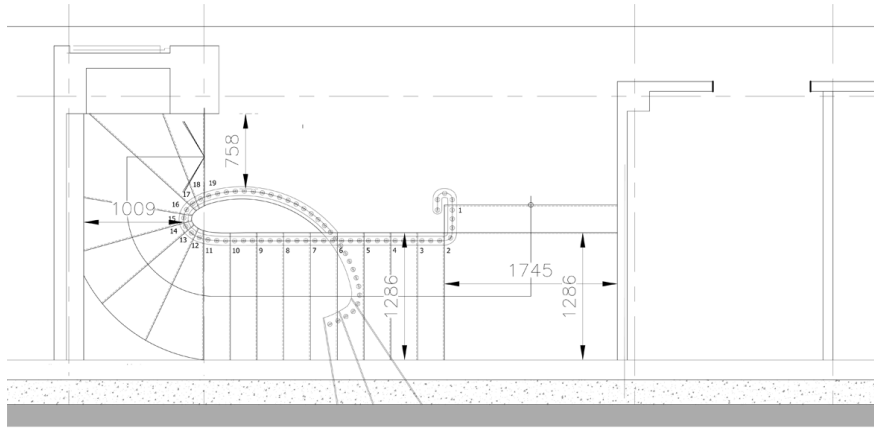
**2. Obergeschoss**



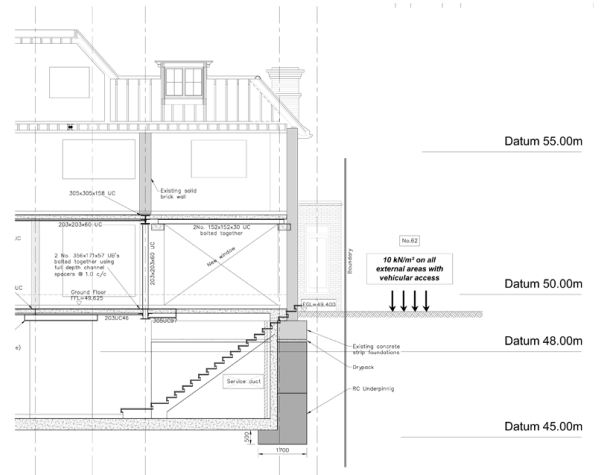
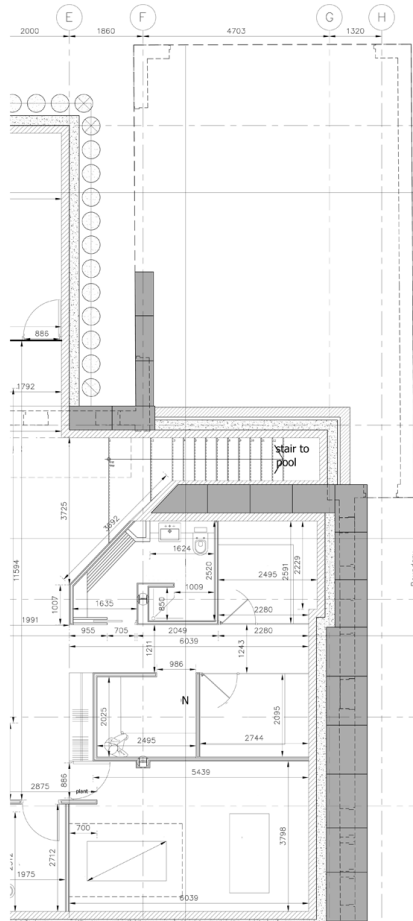
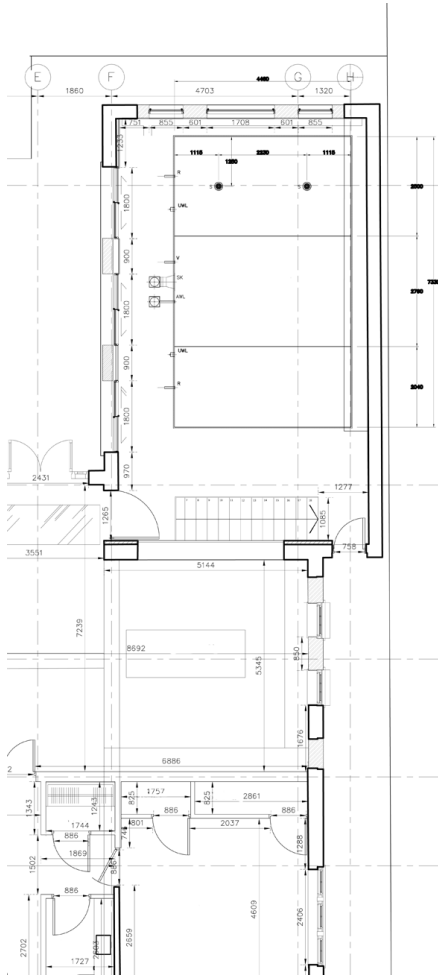
**Schnitt**



**Details**



14 Marshalsea Rd  
 London SE1 1HL  
 Tel. +44 20 74073600  
 www.minifiearchitects.co.uk



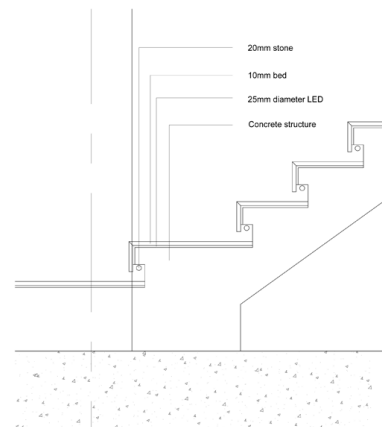
Datum 55.00m

Datum 50.00m

Datum 48.00m

Datum 45.00m

**PROPOSED SECTION**



- 20mm stone
- 10mm bed
- 25mm diameter LED
- Concrete structure

10 kN/m² on all external areas with vehicular access

Existing concrete strip foundations

Drystack

RC Underpinning

Existing solid brick wall

2 No. 300x75x57 LED's bolted together using 4x 10mm bolts

1 No. 100x100x100 UC bolted together

1 No. 100x100x100 UC

1 No. 100x100x100 UC

1 No. 100x100x100 UC

1 No. 100x100x100 UC

1 No. 100x100x100 UC

1 No. 100x100x100 UC

1 No. 100x100x100 UC

1 No. 100x100x100 UC

1 No. 100x100x100 UC

1 No. 100x100x100 UC

1 No. 100x100x100 UC

1 No. 100x100x100 UC

1 No. 100x100x100 UC

1 No. 100x100x100 UC

1 No. 100x100x100 UC

1 No. 100x100x100 UC

1 No. 100x100x100 UC

1 No. 100x100x100 UC

1 No. 100x100x100 UC

1 No. 100x100x100 UC

1 No. 100x100x100 UC

1 No. 100x100x100 UC

1 No. 100x100x100 UC

1 No. 100x100x100 UC

1 No. 100x100x100 UC

1 No. 100x100x100 UC