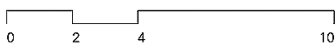
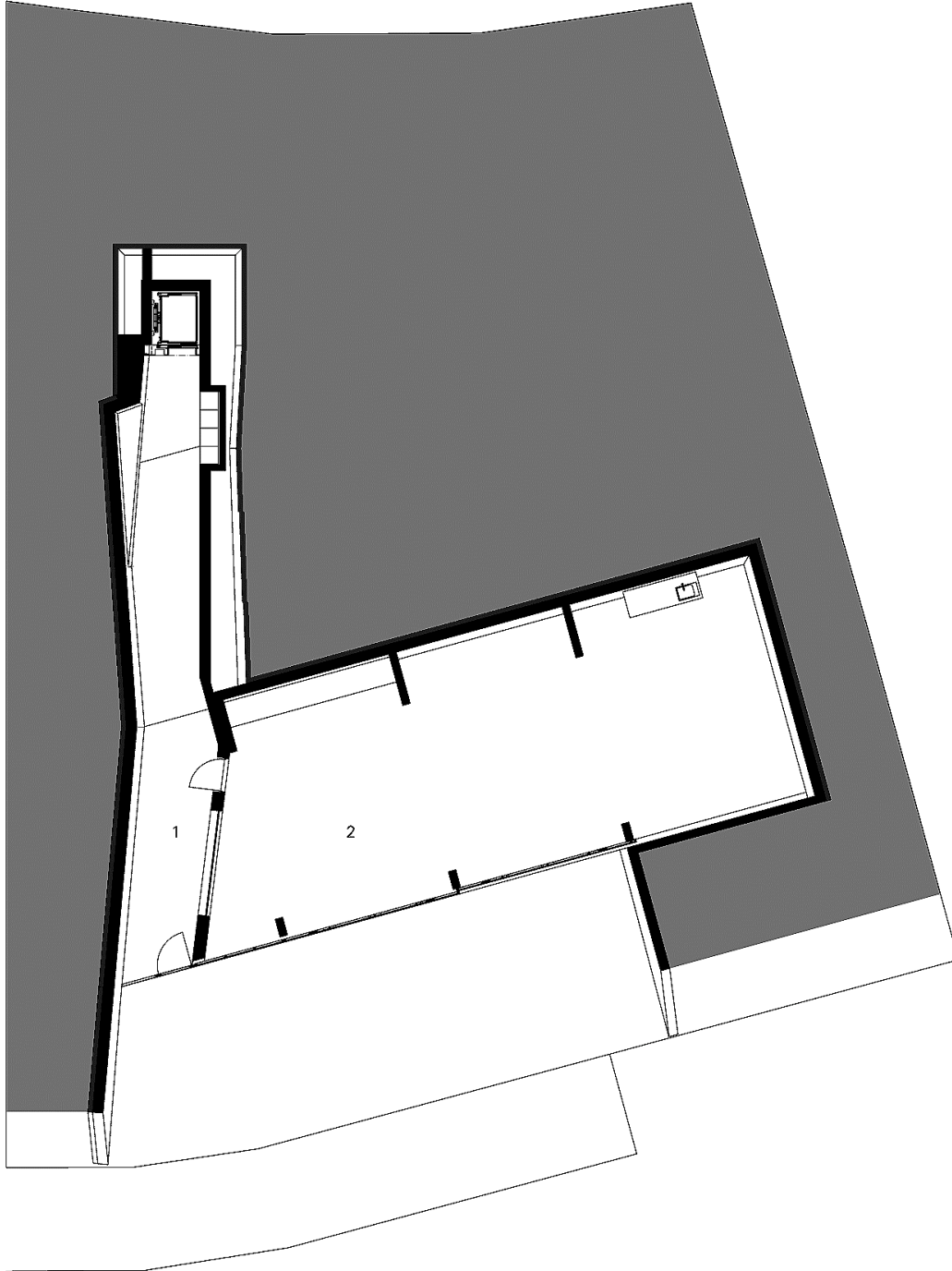


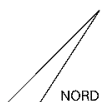
Aargauerstrasse 250
CH-8048 Zürich
Tel. +41-44-438 50 00
www.ungertreina.ch

Ebene 1



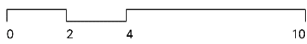
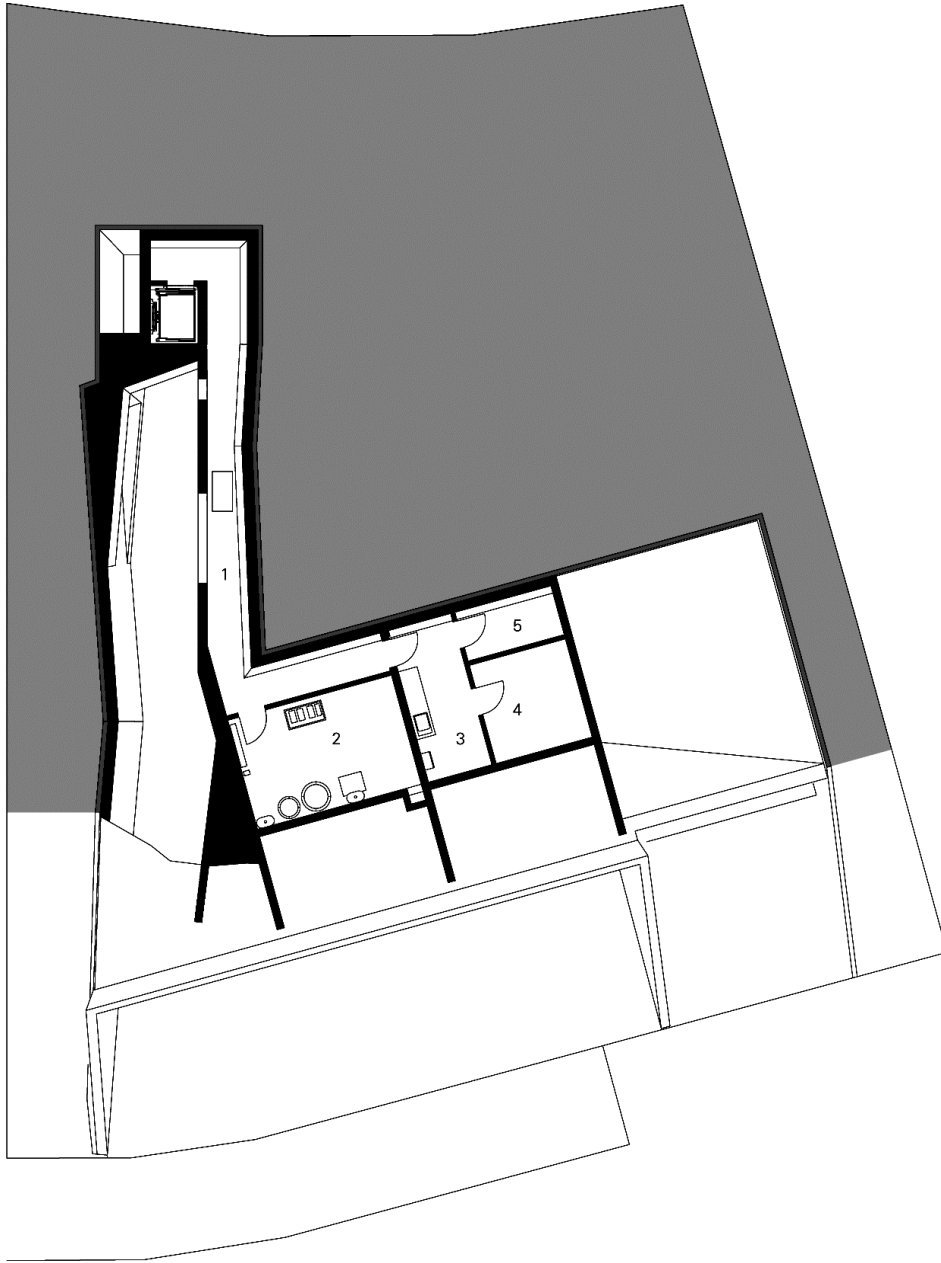
Ebene 01

- 1 Eingangsfoyer
- 2 Einstellhalle



Aargauerstrasse 250
CH-8048 Zürich
Tel. +41-44-438 50 00
www.ungertreina.ch

Ebene 2

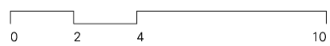
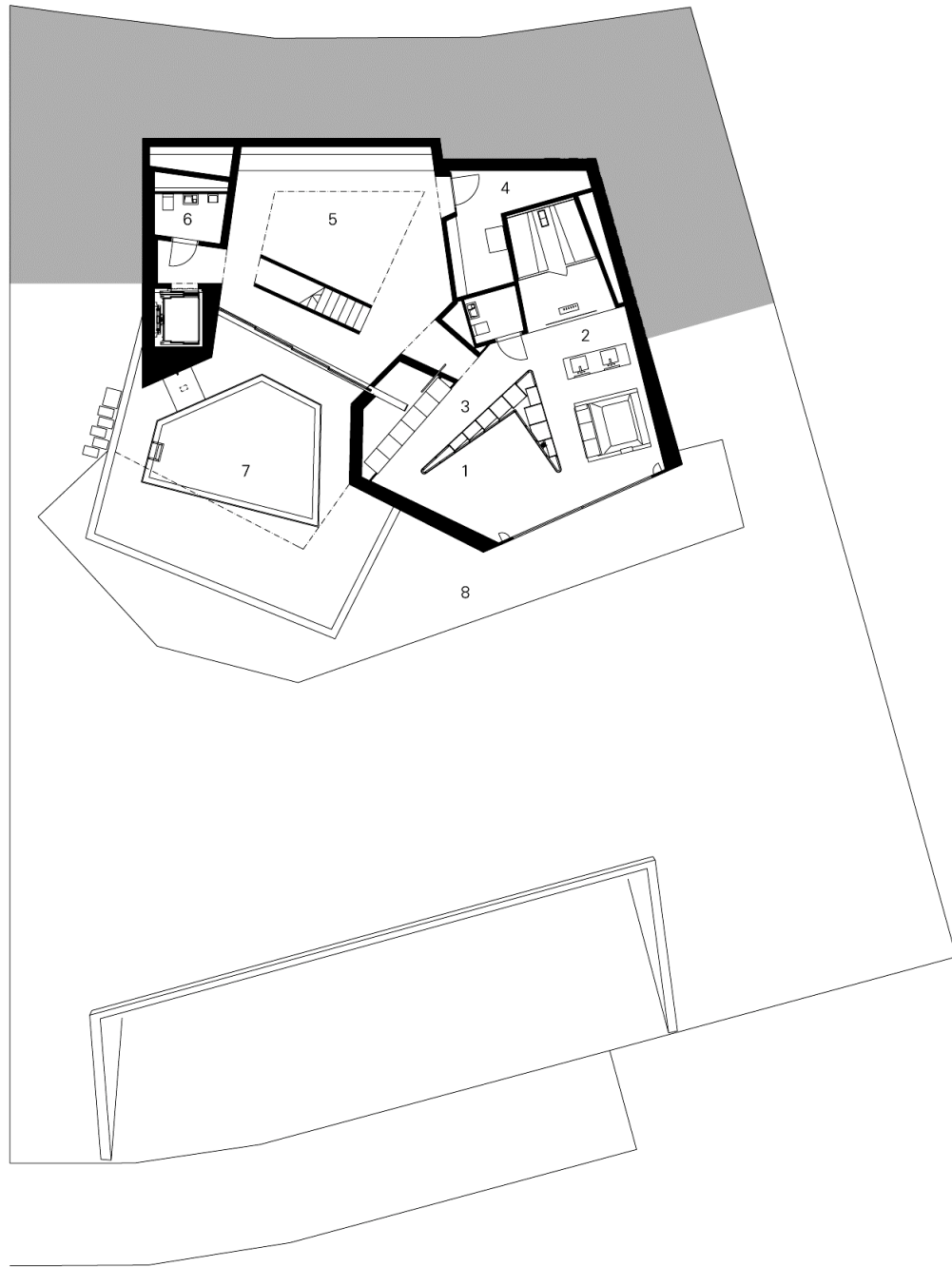


Ebene 02

- 1 Korridor
- 2 Technik
- 3 Waschküche
- 4 Keller
- 5 Weinkeller

Aargauerstrasse 250
CH-8048 Zürich
Tel. +41-44-438 50 00
www.ungertreina.ch

Ebene 3

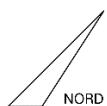
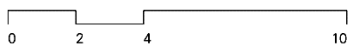
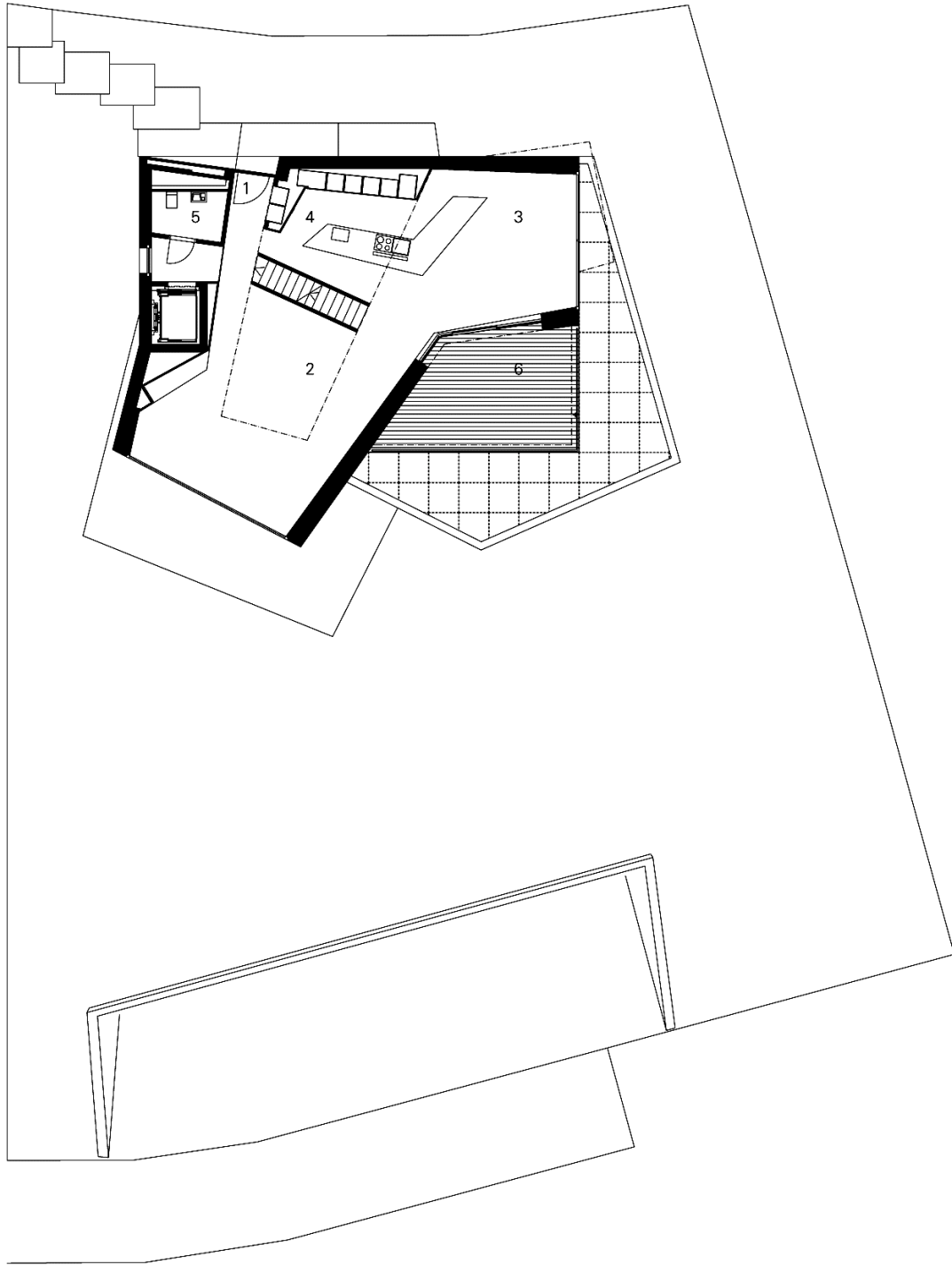


Ebene 03

- 1 Schlafbereich
- 2 Wellnessbereich mit Jacuzzi, Dusche, Sauna und WC
- 3 Ankleide
- 4 Haustechnik
- 5 Fitnessbereich
- 6 WC Gast
- 7 Aussenpool und Sonnendeck
- 8 Wiese

Aargauerstrasse 250
CH-8048 Zürich
Tel. +41-44-438 50 00
www.ungertreina.ch

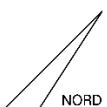
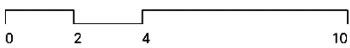
Ebene 4



- Ebene 04
- 1 Eingang
 - 2 Wohnbereich
 - 3 Essbereich
 - 4 Küche
 - 5 WC Gast
 - 6 Terrasse

Aargauerstrasse 250
CH-8048 Zürich
Tel. +41-44-438 50 00
www.ungertreina.ch

Ebene 5

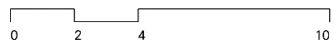
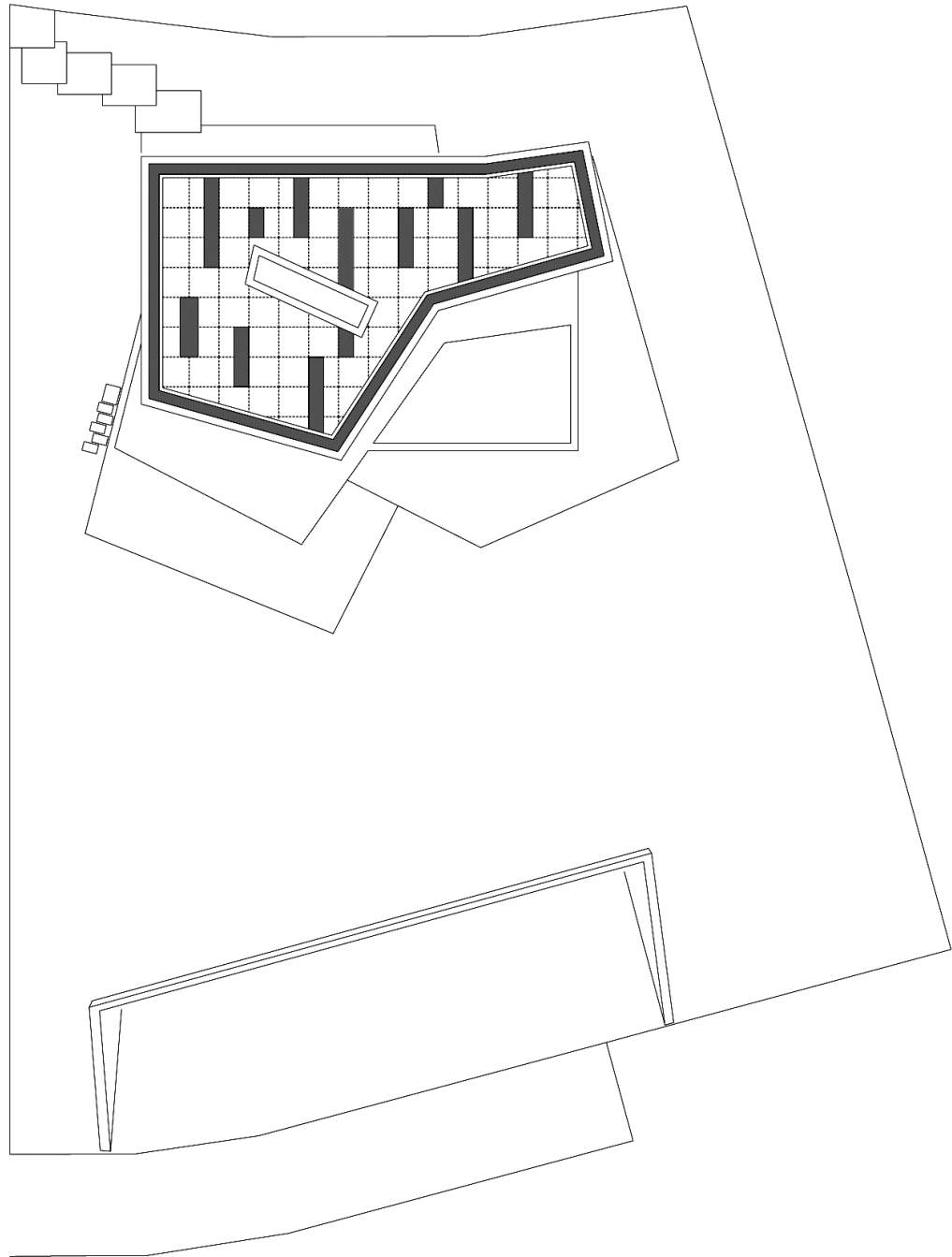


Ebene 05

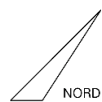
- 1 Büro
- 2 Kino
- 3 Gästezimmer
- 4 WC Gast mit Dusche

Aargauerstrasse 250
CH-8048 Zürich
Tel. +41-44-438 50 00
www.ungertreina.ch

Dachansicht

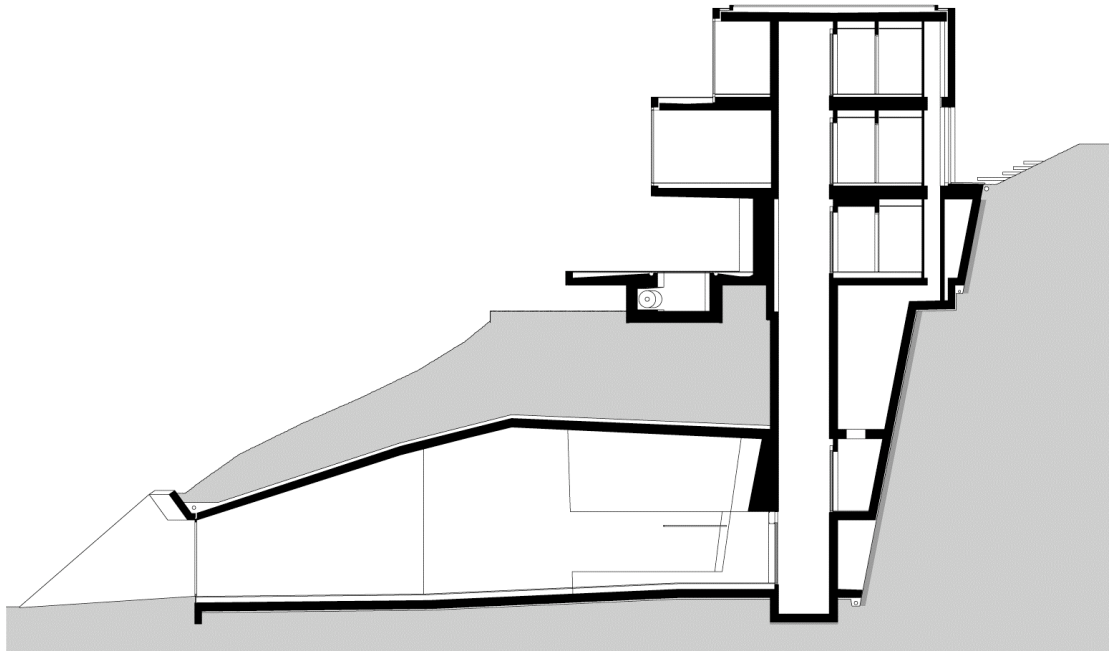


Dachansicht



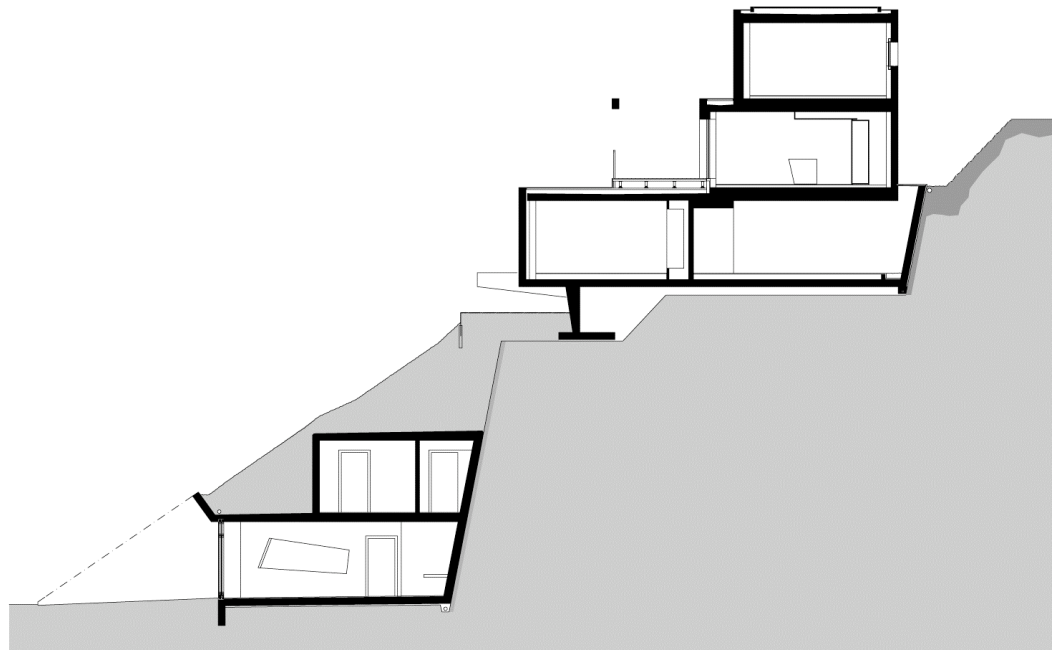
Aargauerstrasse 250
CH-8048 Zürich
Tel. +41-44-438 50 00
www.ungertreina.ch

Schnitte



0 2 4 10

Querschnitt 1



0 2 4 10

Querschnitt 2