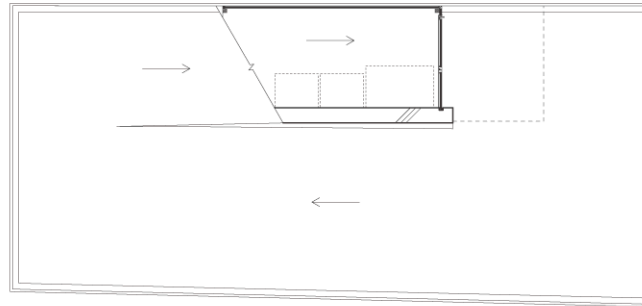
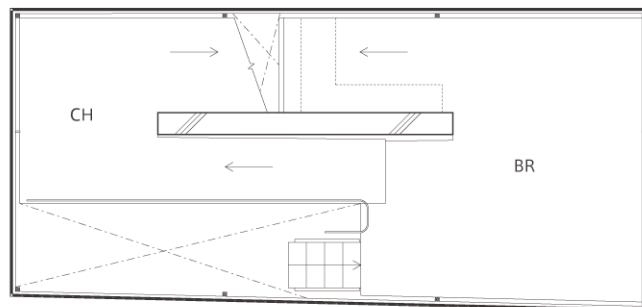


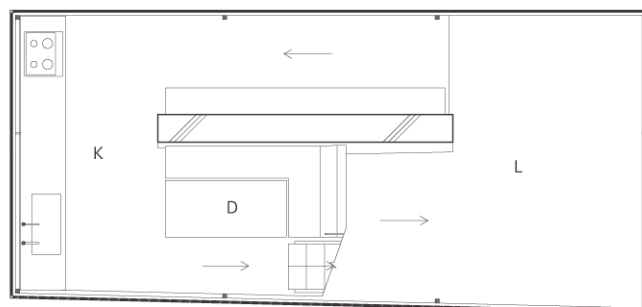
Grundrisse



RF Plan S=1:100

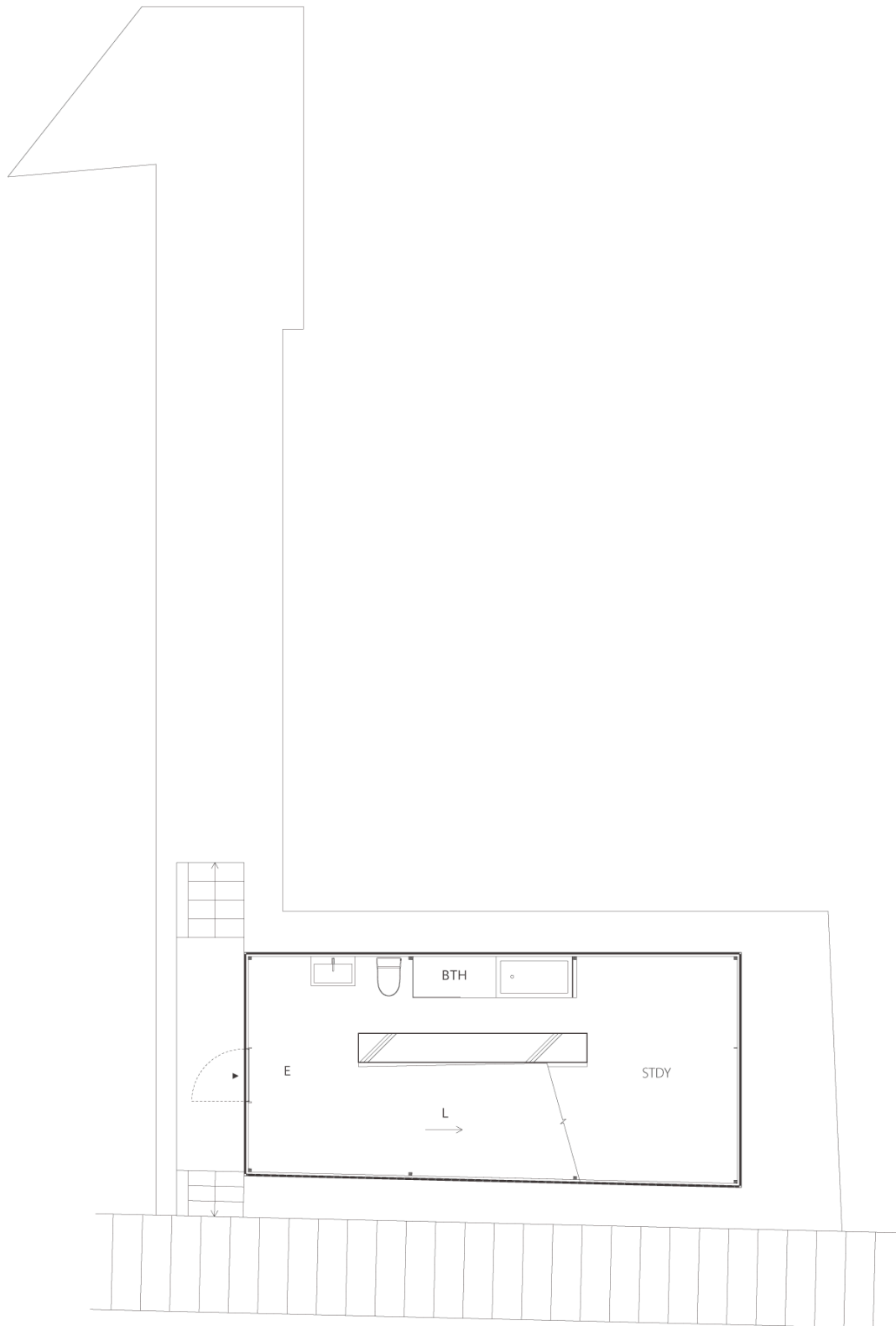


2F Plan S=1:100

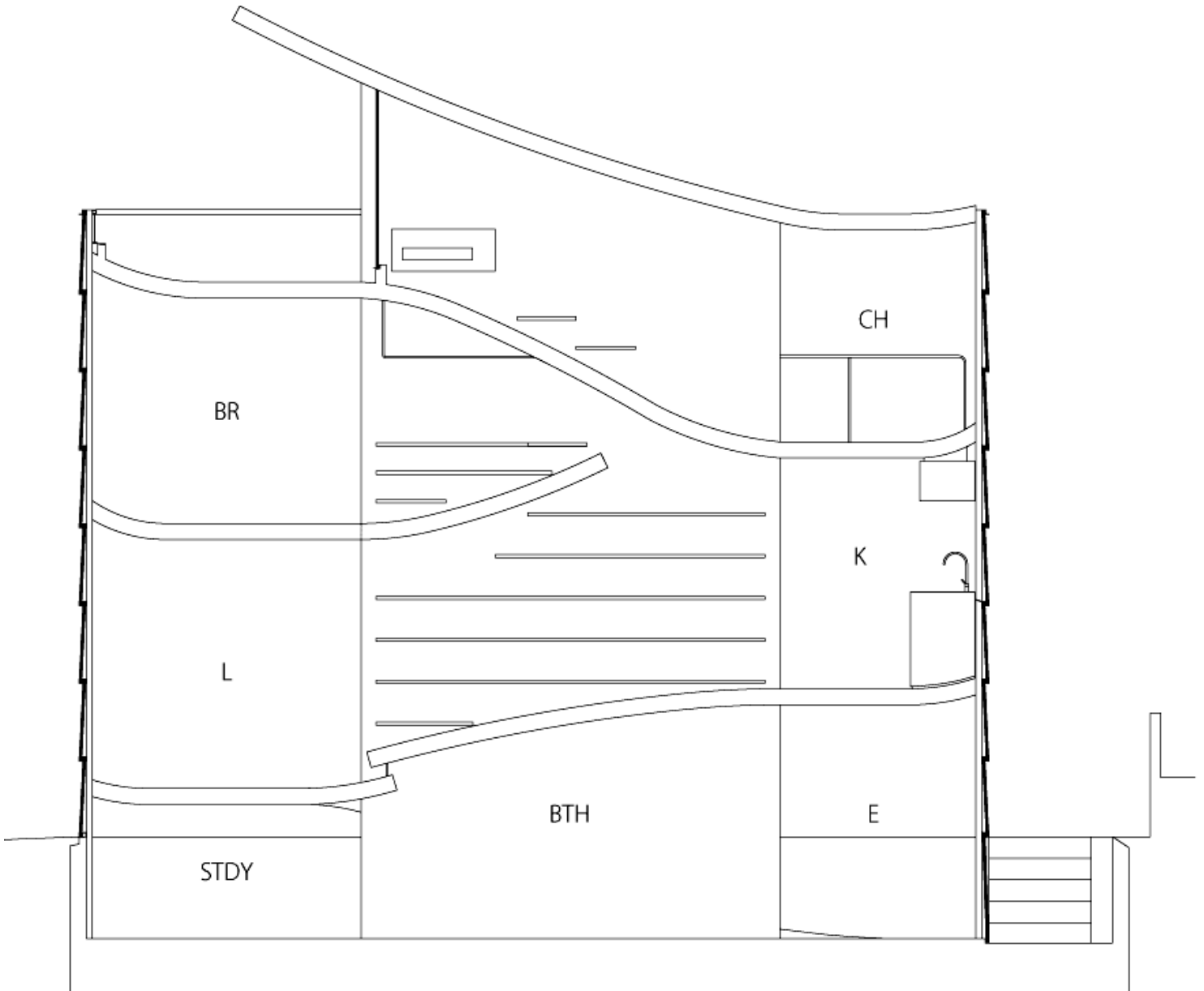


1F Plan S=1:100

Grundrisse

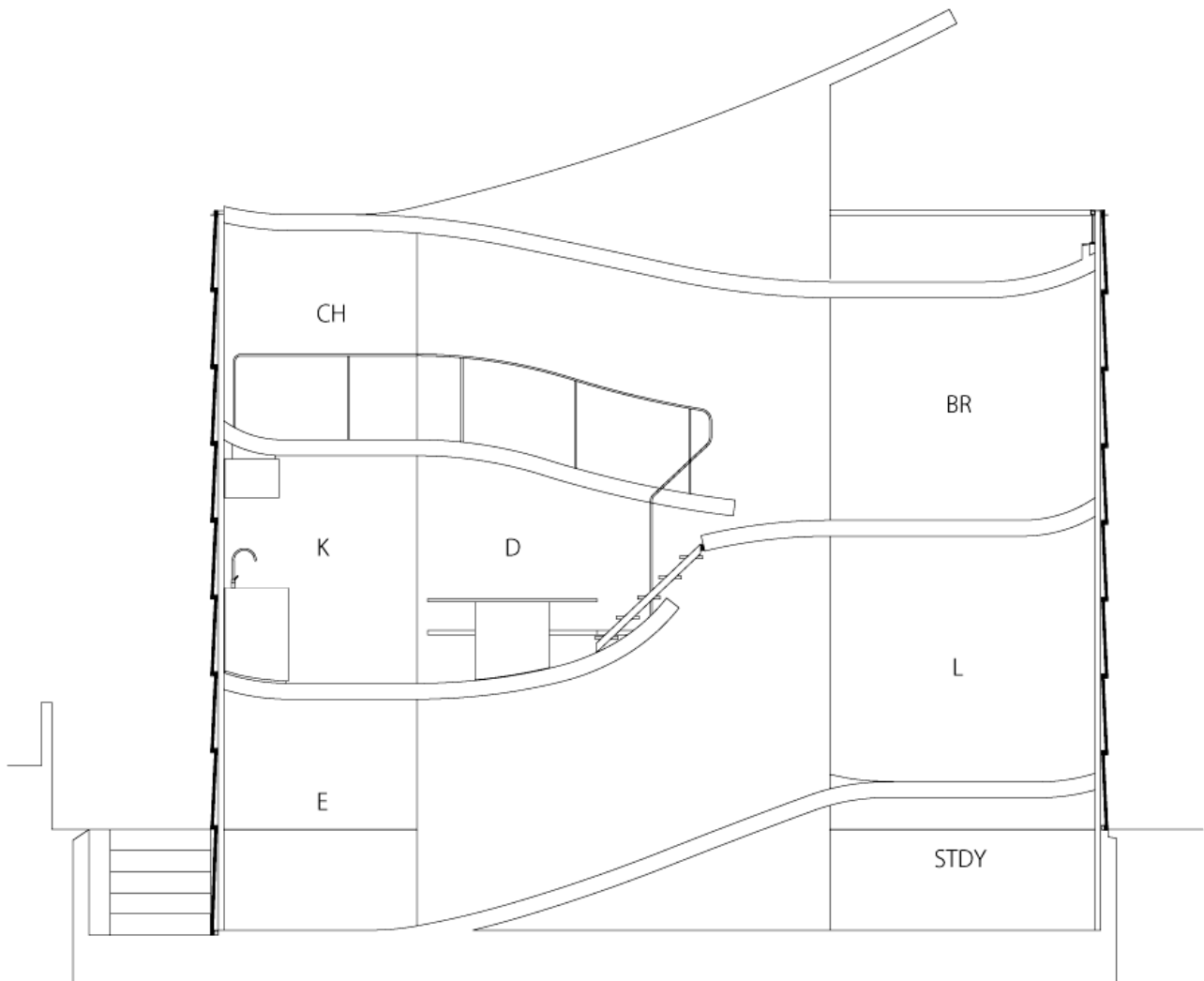


Schnitte



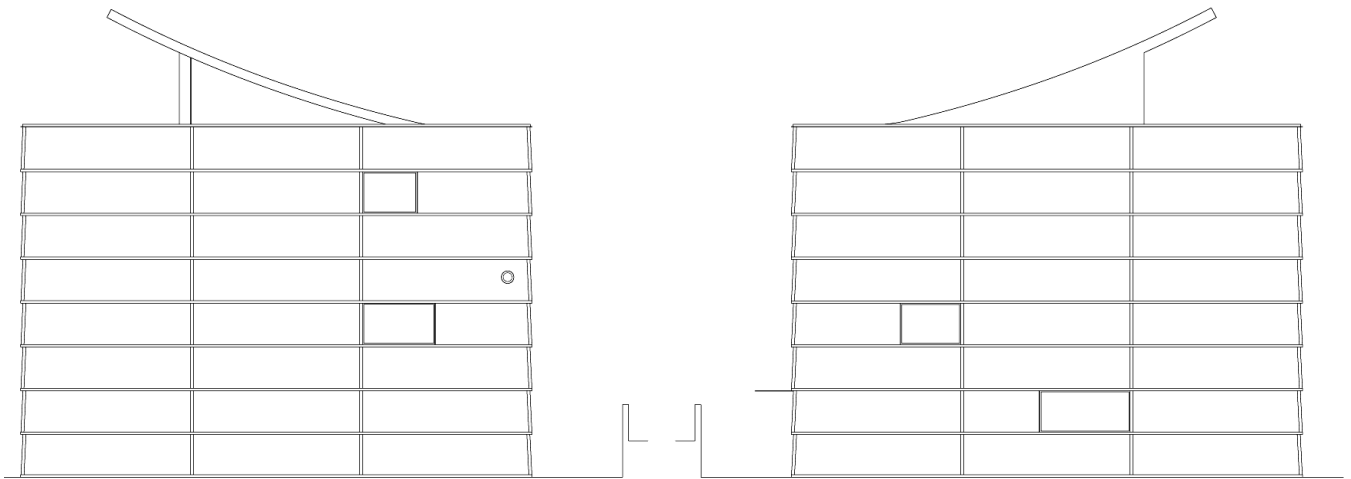
Section S= 1:100

Schnitte



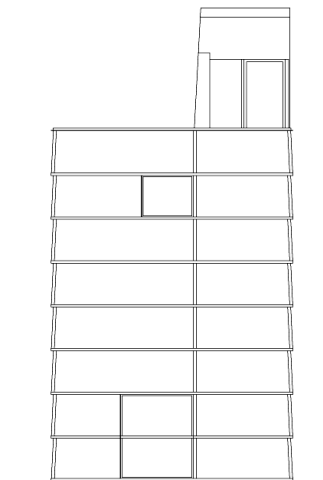
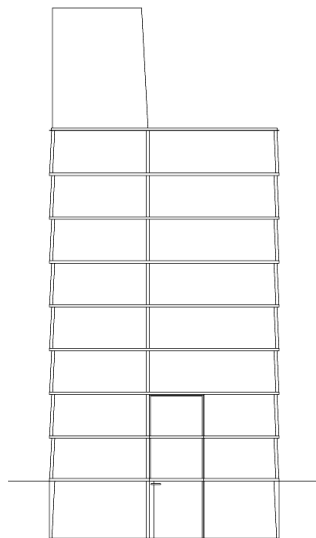
Section S= 1:100

Ansichten



East Elevation S= 1:100

West Elevation S= 1:100



North Elevation S= 1:100

South Elevation S= 1:100

Lageplan



scale 1:6000